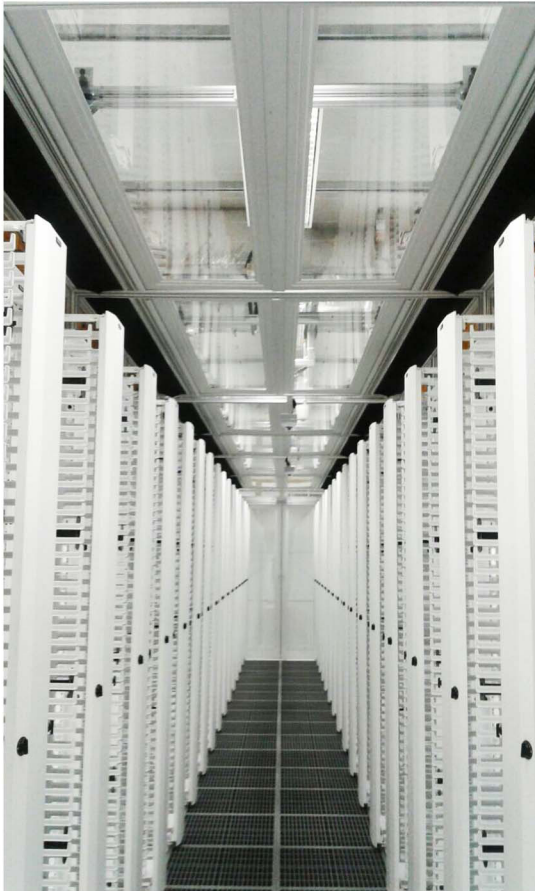


THE FIRE SUPPRESSION ACCESS CEILING



The Fire Suppression Access Ceiling is the perfect addition to any data center fire protection program. In the event of a fire, the ceiling adeptly falls away, allowing sprinklers or fire suppression agents to circulate freely.

The patent pending design features ceiling panels equipped with a electromagnetic droplink activation system. Superior to competing ceiling systems,

The Fire Supression Access Ceiling System is fail safe and creates a fully enclosed environment while inactive.

HOW DO THEY WORK?

When power is applied to the electromagnetic link, it turns on the unit's built in electromagnet.

This electromagnet is attracted to the steel armature plate which is mounted to the ceiling panel, holding the panels up in place.

When power to the link is turned off, the electromagnet releases the armature plate, allowing the ceiling panels drop



BENEFITS

- + Utilizes a electromagnetic droplink activation system to ensure fail safe protection in case of a power outage.
- + Works with a rigid ceiling panel system, allowing for a fully enclosed data center aisle.
- + Ceiling panels fall away through the use of a soft drop system, preventing injury to equipment and personnel in the event of deployment.
- + Fully adjustable Z-bar angle mounting track or riser panels raises ceiling for rack door clearance or other obstacles.
- + System can be tested and reset in an event of deployment.
- + Easy and flexible installation .

PRODUCT SPECIFICATION AND OPTIONS

The fire suppression ceiling is made for easy installation and can be customised based on the specifications of your Data Center .



CEILING SUPPORT OPTION:

- No Racks Required
- No Additional Brackets Necessary.
- Ceiling Support With Treader Rods.

MODEL	DESCRIPTION	SIZE
RC-44-C	Rack Cap, Hinged fold-down frame, Soft Open Shocks, Mag Links - Clear Anodized	4' x 4'
RC-46-C	Rack Cap, Hinged fold-down frame, Soft Open Shocks, Mag Links - Clear Anodized	4' x 6'
RC-48-C	Rack Cap, Hinged fold-down frame, Soft Open Shocks, Mag Links - Clear Anodized	4' x 8'

MODEL	DESCRIPTION	SIZE
RC-44-B	Rack Cap, Hinged fold-down frame, Soft Open Shocks, Mag Links - Black Anodized	4' x 4'
RC-46-B	Rack Cap, Hinged fold-down frame, Soft Open Shocks, Mag Links - Black Anodized	4' x 6'
RC-48-B	Rack Cap, Hinged fold-down frame, Soft Open Shocks, Mag Links - Black Anodized	4' x 8'

ELECTROMAGNET SPECIFICATION:

Model #:	DC-EMDL-14-1
Power:	12-24VDC
Magnet Size:	2.75 x 1.5 x 1 in.
Armature Size:	2.375 x 1.25 x .3125 in.
Holding Force:	55kg
Current Drain:	12V, 160mA
	24V, 80mA
Housing:	Aluminum
Weight:	1lb

ACCESSORIES

MODEL	DESCRIPTION
ZB-22-8-C	Z-Track Mounting - 96"
ZB-22-8-B	Z-Track Mounting - 96"

